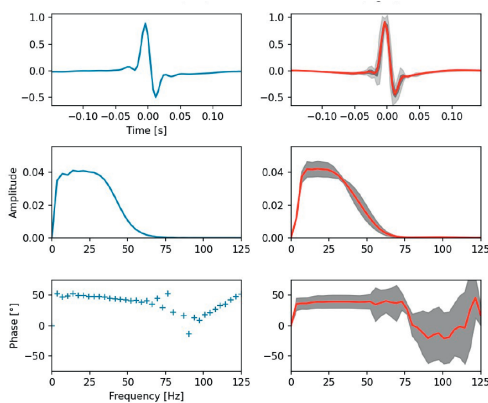


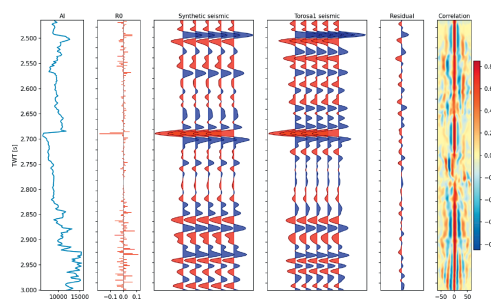
Automated Well-tie

DLseis/Research Consortium

- Semi-automation of the entire well-tie workflow
- **Automated wavelet extraction** using a Variational Autoencoder Network
- Bayesian search for multi-dimensional parameter optimisation
- Optional **stretch-squeeze automation** using Dynamic Time Warping
- **Pre-stack well-tie** capability
- Best fit and **uncertainty estimates**



Wavelet by DNN (right), true wavelet (left)



Final Well-tie by DNN wavelet extraction integrated into the Bayesian search strategy

Contact

Ammar Ghanim
 Department »High Performance Computing«
 Phone +49 1631 31600-4099
 ammar.ghanim@itwm.fraunhofer.de

Fraunhofer-Institut für Techno- und Wirtschaftsmathematik ITWM
 Fraunhofer-Platz 1
 67663 Kaiserslautern
 Germany

www.itwm.fraunhofer.de/hpc